


# RRC

# Roof Remote Control Device

For LEXUS SC430 and TOYOTA SOARER

## User's manual

YouTube Explanatory video URL <https://www.youtube.com/watch?v=fegxYEXSpEg>

Click  at the top right of the YouTube screen to see subtitles automatically translated into English or other languages.



Presented by rouge40 : super soarer : Satoshi Sasaki

# Brief description

Thank you for purchasing RRC: Roof Remote Control Device.

This device allows you to open and close the roof of the Lexus SC430 using a remote control. The remote-control transmitter has one-touch buttons: [OPEN]▼ and [CLOSE]▲, and once pressed, the roof continues to open and close. If you want to stop the roof midway, press the [STOP] ■ button.

Also, [OPEN]▼ and [CLOSE]▲ are under exclusive control, so if you press the opposite button during opening/closing operation, the reverse operation will start immediately.

**(This device does not have an engine start function, and you must manually turn the key ON or start the engine before use this device.)**

The prototype of this device was invented by me in 2009, and I made it myself and have proven it to be trouble-free for about 14 years, but now I have created an improved version that anyone can easily install, and I have started selling it. did.

When creating the improved product, I focused on reliability and safety above all else, and also carefully considered parts procurement in order to reduce the cost. The connectors are original equivalents and are securely connected, and the relay body is also carefully checked for quality and operational integrity. Furthermore, after assembly, we conduct a bench test to confirm normal operation, so you can use the product with confidence.

## ■ Note ■

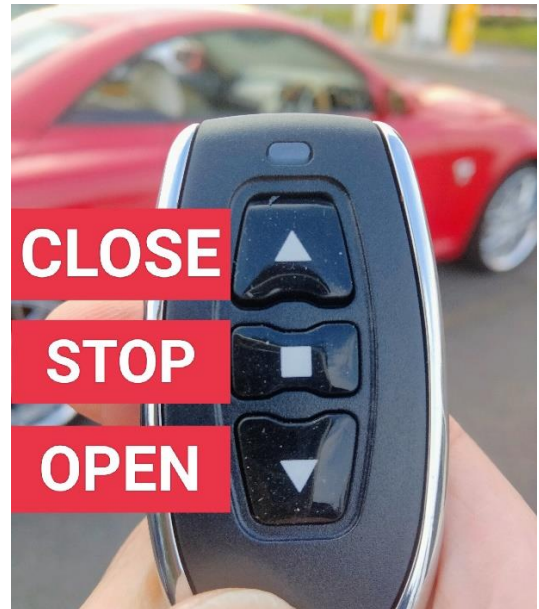
User agrees to assume all responsibility for the installation and use of the Product as stated on the Product Purchase Page. Therefore, please read this manual carefully before installing and using the product.

## ■ Note ■

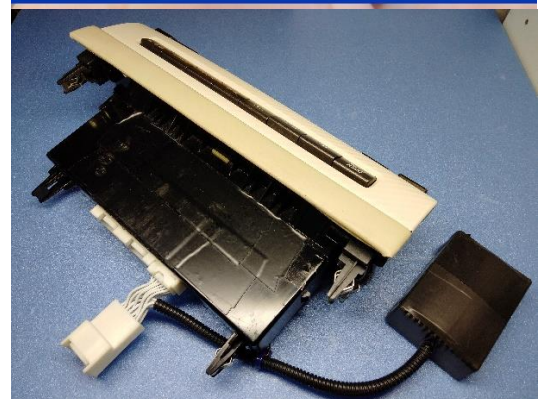
When lifting the product, be sure to hold it by the main body, not by the wires only.

## ■ Note ■

Never open the cushion protection sheet of the main unit. When opened, the wiring may become poor contact. In that case, we cannot accept returns or compensation.



## Remote Roof Control



# How to install

## ■ Things to prepare ■

- Curing tape, towels, etc. to prevent scratches around the audio console.
- A small flat head screwdriver used to remove the connector.
- Phillips screwdriver used to turn the small screw at the rear of the climate control unit
- Handy light for checking the dark wiring space at the rear of the climate control unit when restoring and inserting it

1. Park in a safe place and apply the parking brake in P range.
2. Start the engine and check if the roof is working properly.
3. Stop the engine.
4. Please protect the entire audio door, its surrounding area, and the area around the climate control panel from being scratched.
5. Remove the entire climate control unit.

- (1) Open the audio door and NAV display door.

(To make it easier to grasp the climate control unit)

- (2) Grasp the entire climate control unit firmly from the front with both hands and pull it out toward you while shaking it up and down. There are 6 large claws on the back of the climate control unit that are stuck towards the back, so it's quite hard, but if you patiently shake it and pull it out, it will come off.

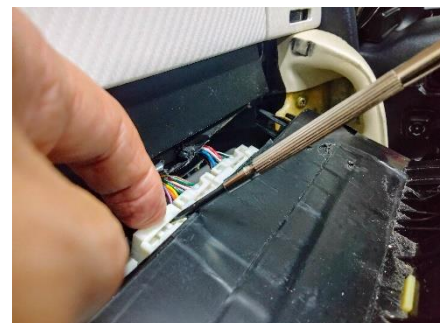


- (3) Once you have pulled it out, close the audio door to avoid scratching it.
- (4) Protect the area from the top of the audio door to the top of the shift lever by covering it with a towel, etc. Place the climate control panel on top of it.

6. Remove the engine key.

7. Disconnect the three connectors behind the climate control panel. The connector is very hard and difficult to remove, so while holding down the unlocking claw with your finger, use your other hand to push it little by little with a small flathead screwdriver to remove it.

Remove the entire climate control unit.





8. Insert the connector into the left connector of the climate control unit.



9. Remove the screws at the rear left side of the climate control panel and secure the metal fittings fixed to the wiring tube there.



**Important ⇒ Refer to the photo below and check that the wiring tube is in the correct position.**



10. Place the relay body in the internal space to the left of the audio.

11. Reinstall the entire climate control unit.

- (1) Insert the center and right connectors of the climate control unit.
- (2) Insert the product while checking that the wiring of the product and the wiring at the rear of the connector go in smoothly without getting in the way. If it does not fit completely, please make slight adjustments so that the wiring etc. do not block the entrance of the claw.
- (3) Finally, readjust the time display to the correct time.



## How to use

If the engine key is in the ON state, power is supplied to the relay body and the product can be used.

(It is recommended to operate with the engine started to avoid battery consumption)

1. To open the roof: Press [OPEN]▼ on the remote control once.
2. To close the roof: Press [CLOSE]▲ on the remote control once.
3. [OPEN]▼ and [CLOSE]▲ can be reversed at any time with a single touch.  
(Be careful not to press the wrong button)
4. To stop during opening/closing operation: Press [STOP] ■

**5. Once the roof operation is complete, press [STOP] ■ once.**

(If you continue to drive, the lamp on the original switch will flash red. This indicates that operation commands are still being sent to the roof computer.)

6. If it does not work properly, please check the following locations.
  - Is the engine started? (Engine key is in the ON position)
  - Is the tonneau cover closed securely?
  - Is the trunk securely locked?
  - Is the trunk opener cancel switch in the glove box in the pushed position?
  - Are all the connectors of the climate control unit firmly connected?
  - Is the wiring disconnected from this device?
  - If the remote control lamp does not glow red when you press the remote control button, the remote control battery is dead.

Please replace with a new button battery CR2032.

## Precautions for use

1. The distance that can be fully operated with the remote control is approximately 10m. Please use it at a distance that allows for an emergency stop.
2. For your safety, please make sure that there are no people near the car, especially children.
3. Please note that the roof and window motors will generally overheat if operated repeatedly.
4. If the original roof switch lamp is flashing red, press [STOP] ■.
5. Be careful not to accidentally press the button on the remote control and cause the roof to operate.
6. Please note that if the button on the remote control is left pressed unexpectedly in your pocket or purse, the battery will drain.

The product has been fully tested before shipping, but if there is a malfunction, please contact us by email. [supersc430@gmail.com](mailto:supersc430@gmail.com)

We will issue a refund or exchange as soon as we can confirm this with photos or videos.