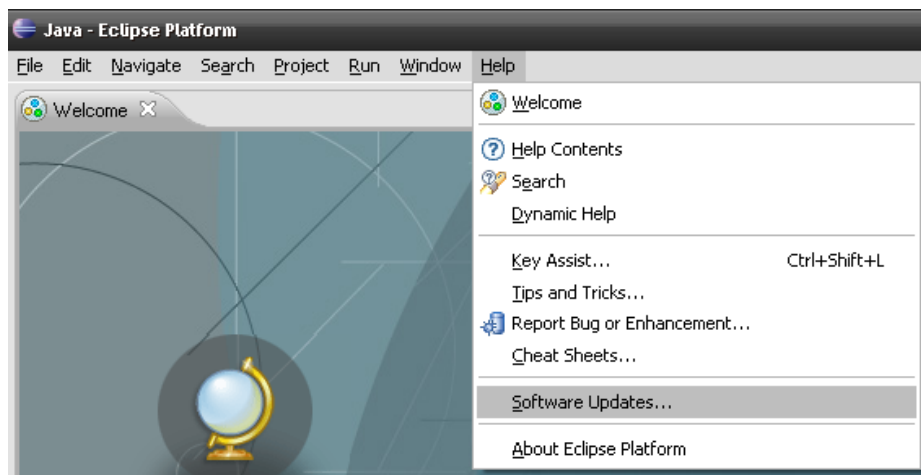
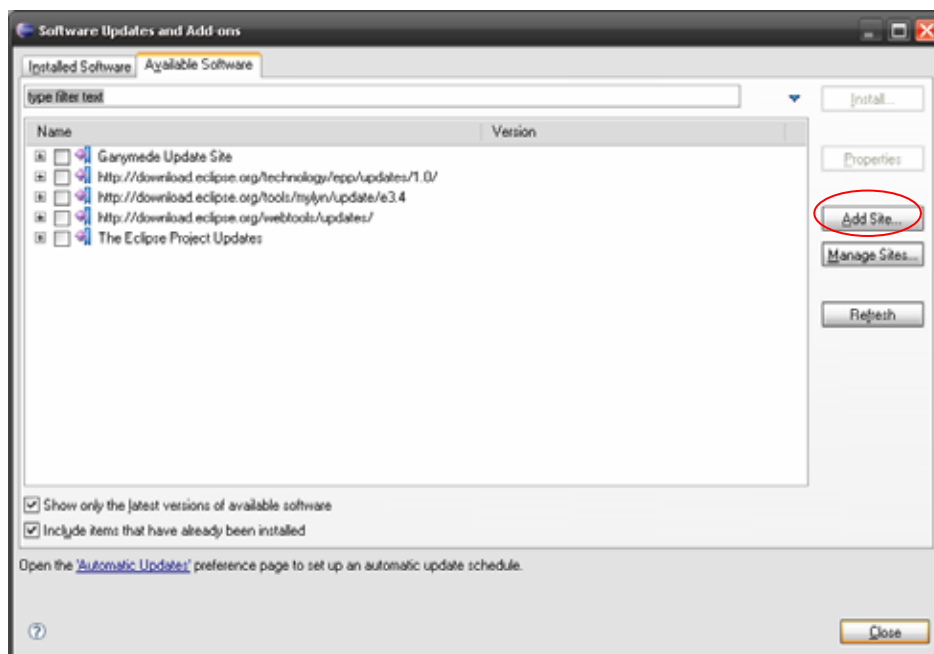


Capter 1:Installing a Plug-in with an Update Site

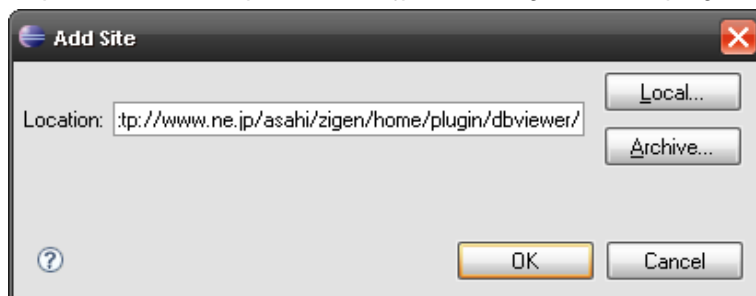
1.1 Select Help > Software Updates



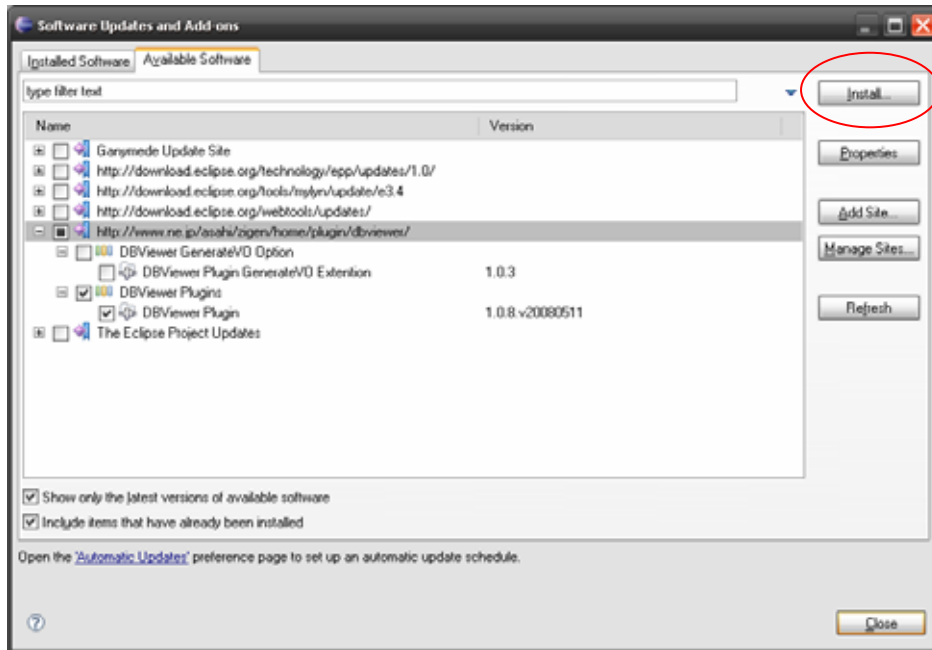
1.2 Click the Available Software Tab. And Click the Add Site Button.



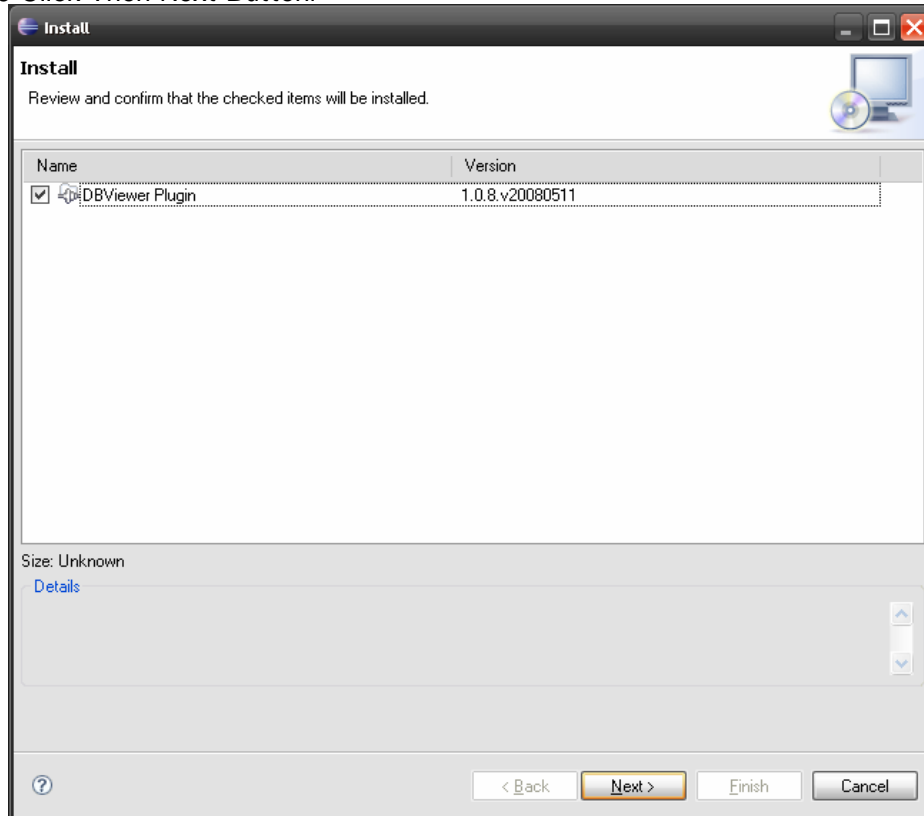
1.3 Input location "http://www.ne.jp/asahi/zigen/home/plugin/dbviewer/". And Click the Ok Button



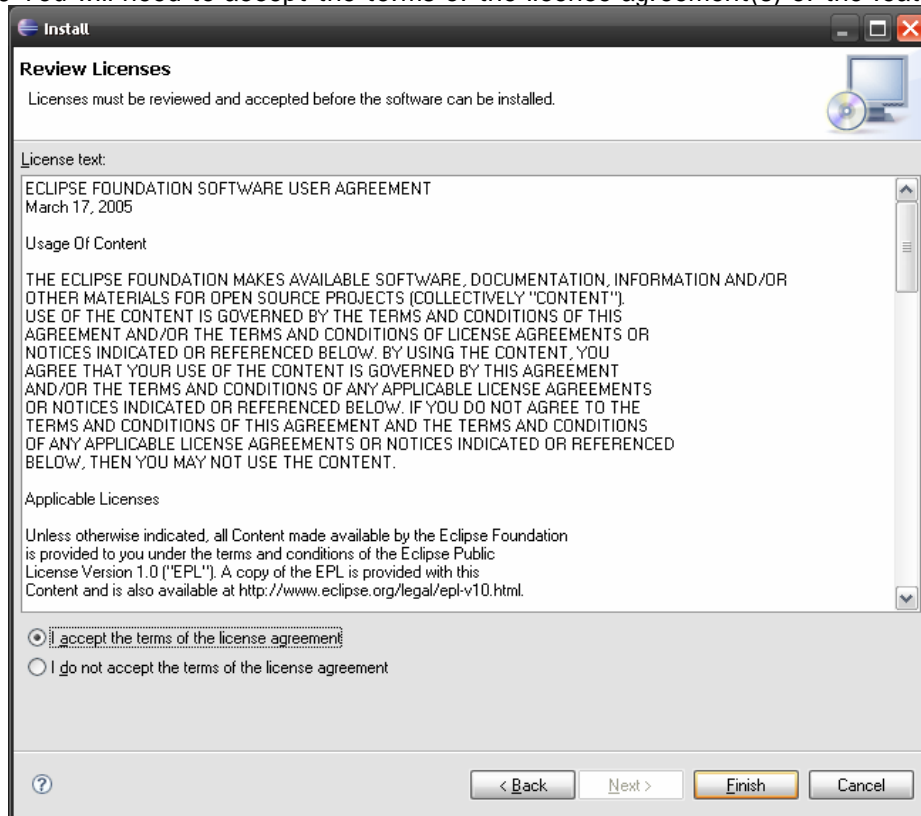
1.4 Select the "DBViewer Plugins" checkbox. And Click the Install Button.



1.5 Click Then Next Button.



1.6 You will need to accept the terms of the licence agreement(s) of the feature(s) that you are inst



1.7 You will be asked to restart the workbench. Click Yes.

