

ACCESSORIES

VOLVO 240



VOLVO
Tourist & Diplomat Sales

*Thanks to a large amount of different
Genuine Volvo Accessories, you can make your Volvo exactly
the car you want it to be. More beautiful, faster, sportier,
more comfortable and more practical.*



*This is your catalogue of Genuine Volvo
Tourist & Diplomat Sales Accessories. A most comprehensive
accessories programme. Developed by Volvo for your tax- and duty-
free Volvo. It provides you with the opportunity of creating
your own, very personal Volvo.*

SPECIAL PARTS KIT:

A kit containing parts for easy repairs.

Contains distributor, distributor cap, bulb kit, thermostat, fuses, 2 wiper blades, filter kit, fan belts, brake fluid, 8 spark plugs, radiator hose and 2 oil filters.

PARTS KIT FOR OVERSEAS**CONTAINS:**

Distributor, distributor cap, bulb kit, thermostat, fuses, 2 wiper blades, filter kit, fan belts, brake fluid, 8 spark plugs, radiator hose and 2 oil filters. Ignition cable kit, 2 front wheel bearing kits, brake pad kit, repair kit — brakes, repair kit — master cylinder, 4 brake shoes, 5 wheel nuts, O-ring AC, carbon brush set, fuel filter, repair kit — fuel pump, relay, tooth belt, coolant pump.

Well worth having in the garage or in the boot. Contents may vary depending on model of car.

In the interest of product development, Volvo retains the right to modify design and construction without previous notice.



1. COOLANT HEATER TYPE 091.

An effective and fuel-efficient heater which runs on petrol or diesel. Heats both engine and car. Connects to the car's ordinary heating system. The car's own heating fan starts automatically when the system switches on. Installed in engine compartment, customised assembly kit. Heating capacity 4.500W. Includes digital timer

2. Programmable for three starting times per day. One hour running time. Green display. For Sweden, Norway, Finland, Denmark, Germany.

3. ENGINE HEATER.

Warms up the engine coolant. Customized to suit the engine. The power is supplied via a plug installed in grille. For Sweden, Norway, Finland, Germany.

4. INTERIOR HEATER.

The fan-type heater has three outputs: 800, 1.200 and 1.600W. Thanks to the three settings, you are always sure of maximum output, even when the engine heater is switched on, and irrespective of whether your power supply has a 6-Amp or 10-Amp fuse. For Sweden, Norway, Finland, Germany.



fit all models except Diesel or Turbo variants.

7. FIRST-AID CUSHION.
Contains a first-aid kit.

8. FIRE EXTINGUISHER
Two kilo capacity highly efficient powder extinguisher. Complete with pressure gauge and holder for mounting in front of passenger seat.

9. HEADLIGHT WIPERS AND WASHERS.
(Only for Overseas models.)

10. LOCKABLE TANK CAP.
Easy-grip tank cap. Corrosion-proof lock barrel. Standard on UK and Overseas models.



1. 25-SPOKE RIM.

Size 5 1/2×14". Weight 6.8 kg. With large hubcap. Standard on 240 GLT UK and European models, 240 GL US models and 240 GLE Overseas models.

2. CLASSICAL MULTI-SPOKE RIMS.

7×15". Weight 7.5 kg. Complete with tyres 195/60-15" and hubcaps.

3. EXTRA-WIDE 5-SPOKE ALUMINIUM RIMS.

7×16". Weight 7.7 kg. Complete with tyres 205/55R16V. Hubcaps are included. A special spanner is also included for the hubcaps. Not for 240 station wagon.

4. FOG LAMPS, RECTANGULAR.

Improve visibility in foggy conditions. Intended for installation in front of spoiler. Clear lens. Aperture 145×86 mm.

5. WINTER WHEELS.

Steel radial tyre with asymmetric shoulders fitted on Genuine Volvo rims. Available with or without studs. Hub caps kit ordered separately, if the car has aluminium rims.

6. STABILIZERS AND SHOCK ABSORBER KIT.

Together these form a complete road-holding kit which gives the car sportier characteristics. The R-sport stabilizers

1



2



3



4



2. SEAT BELT SAFETY CUSHION WITH BACKREST.

The best protection for a child that has outgrown the safety seat. The child sits on the cushion and uses the standard Volvo three-point inertia rear seat belt. Crash-tested and fully approved according to European and US requirements. Not for France.

3. CHILD SAFETY CUSHION WITHOUT BACKREST.

Same characteristics as 2.

4. CHILD GUARD.

Prevents children from being thrown forward between the seats by sudden braking, etc. Attaches between the front seats.

MAKE YOUR VOLVO JUST AS SAFE FOR CHILDREN AS IT IS FOR YOU!

It goes without saying that children are entitled to travel in cars in exactly the same safety as adults.

That is why we have Genuine Volvo child safety accessories. Designed to provide maximum safety in Volvo cars — without compromising. The only child safety range which has been developed by a car manufacturer.



1. CHILD SAFETY SEAT.

By far the safest form of travel for children from newly born to about four years old, or weighing about 18 kg. Can be installed either rearward or forward-facing, both front and rear seats. Volvo recommends the rearward-facing alternative. The seat is secured by the standard seat belt of the car. The child is secured in the safety seat by means of a five-point harness. For infants up to about six months of age, the seat can be angled backwards so that the

child is in a semi-reclining position. When the child is older, the seat can be tilted forwards.

Satisfies Volvo's very stringent requirements on fire resistance. Safety seat cover machine washable 40°C. Suitable for use in all versions of the Volvo 700, 200 and 300 Series. Not for France.



ternational standard. Including removable 2" and 1 7/8" balls. (Only for US models.)

3. SUSPENSION LEVELLING SYSTEM. Lifts the rear suspension to the normal level when hauling a trailer or carrying a heavy load. Fully automatic, adapts the suspension to the load carried or towed by the car. Standard on 240 station wagon European models

4. EXTRA SEAT. Easily fitted, rearward-facing extra seat for children. Equipped with armrests, head restraints and 3-point seat belts. Can be quickly folded down into the cargo area floor cavity. Washable, fire retardant upholstery. Black or beige.

5. SAFETY NET. Folds easily up against the roof lining when not needed or when it would be in the way for lengthy loads.

6. LOAD CARRIERS. The individual load system in which the load carrier forms the basis. It can then be extended with accessories to suit virtually every transport requirement like carrier basket and ski holder.

7. ROOFRACKS.

8. SKI HOLDER. Lockable ski holder.

9. CARGO COVER. Holds the cargo securely in place and also keeps it concealed. Held in place by load lashing straps. Available in black, blue, beige or brown.

10. EXTRA FLOOR MAT FOR CARGO AREA. Protects the fitted floor mat against wear and soiling. Black, acid-resistant rubber. Fire-retardant.

TURN YOUR VOLVO INTO THE PERFECT FAMILY CAR!

For people with a Volvo there is a wide range of accessories to make your car even more practical.

Accessories which enable you to carry enormous loads — and to do so in safety!



1. "CHROME-ON-THE-ROOF" RACK.
A very attractive and elegant roofrack of USA type. This rack is intended for permanent fitment to the roof on station wagons. Max load: 50 kg spread. Chrome or black.

2. TOWBAR, STATIC.
Volvo towbars satisfy ISO and TUV norms. Approved for 1.500 kg towing load. Fit ready-drilled holes in body. The installation and design of the towbar have been carefully tested for the best results.

With plug-in socket for electric leads and indicator lamps in accordance with international standard. (Not for the US and Canada)

TOWBAR FOR THE US AND CANADA
Easily mounts to the pre-drilled body member. Made to provide proper towing characteristics. Maximum load 3.300 lbs/ 1.500 kg. (Consult your owner's manual before towing a trailer.)

With plug-in socket for the electric leads and indicator lamps in accordance with in-



TURN YOUR VOLVO INTO A PART OF YOURSELF!

The Genuine Volvo Interior Design programme has been designed for people who want to set their very own personal stamp on the interior of their car.

The Genuine Volvo Interior Design programme has to come up to the same rigorous standard and pass the same gruelling tests as the standard Volvo interior fittings. This gives you the best possible guarantee that the upholstery programme has top-class colour-coding, fit, high fire resistance and resistance to burling and fading.



1. SEAT COVERS, DIPLOMAT.

Colour coordinated to match car interior, pin-stripe design. Choose between blue and brown with grey or beige pin-stripe. Made of soft, comfortable and durable material. Foam wash. Complete set for front and rear seats and head restraints.

2. FLOOR MATS, THERMOPLASTIC.

Moulded floor mats of tray type to fit floor profile. Colour coordinated to suit the car interior. Satisfy all Volvo requirements. Fire retardant, heat resistant and very durable. Complete set, front and rear. Black, blue, grey, beige and brown. Sold in sets of four.



engine, engine wear, or by leakage in the oil system.

5. VACUUM GAUGE.

Measures partial vacuum in induction manifold and gives warning of uneconomic driving. (Not for Diesel.)

6. VOLTMETER.

The voltmeter measures battery-voltage with only the ignition on, and system voltage when the engine is running.

7. AMBIENT TEMPERATURE GAUGE WITH DIGITAL DISPLAY.

Provides you with information concerning temperature changes as you travel. Measures ambient temperature just above the road surface and is an ideal complement to weather reports. Together with the information provided by static outdoor thermometers, it gives useful warning of slippery conditions.

A red light emitting diode indicates the temperature range where there is a risk of blank ice or frosty roads. The green display

has automatic brilliancy control which lowers the brilliancy after dark.

8. INSTRUMENT CASING.

Holds three extra instruments, diameter 52 mm. The vacuum gauge, voltmeter, oil temperature gauge without a sensor, oil pressure gauge without a sensor, clock and tachometer all fit. Designed for fitting above the dashboard in the speaker grille position.

TURN YOUR VOLVO INTO A DRIVING EXPERIENCE!
Genuine Volvo Accessories have been designed for people who like cars and driving.

They give you the opportunity to maintain full control of all the different functions and enhance your driving pleasure.



1. GT STEERING WHEEL.

An exclusive steering wheel bound in genuine high quality leather. Safety and crash-tested. Diameter 375 mm.

2. TACHOMETER.

Keeping a check on engine speed, using power resources efficiently and reducing fuel costs. Large easily read dial with red warning sector for overrevving. For 240 Series with four-cylinder petrol engines or six-cylinder diesel engines. Diameter 80 mm

for fitting into main instrument cluster. Diameter 52 mm for fitting into extra instrument panel.

3. OIL TEMPERATURE GAUGE.
Measures the temperature of the oil in the engine sump. Measuring range 50°C – 150°C.

4. OIL PRESSURE GAUGE.
Shows engine oil pressure. Low oil pressure can be caused by excessive loading of the



button, or from the outside using the key. Standard on 240 US, UK and most Overseas models.

6. FLAGPOLE.

Specially designed for Volvo Tourist & Diplomat Sales. To be fitted in pre-mounted holder on left or right front fender. Stainless steel pole of telescope type, detachable and shock-absorbing.

Measurements:

Pole: Min height 390 mm, max height 680 mm.

Flag: Min height 60 mm, max height 350 mm.



1. ELECTRIC POWER WINDOWS.
Just a touch of the button and the window glides smoothly up or down. Available for both front and rear doors. Standard front and rear 240 GLT UK, 240 GL US, 240 GLE Overseas, and front on 240 GL UK.

2. ELECTRIC POWER CONVERSION KIT FOR SUNROOF.
A complete kit for cars with manual sunroof. Beneficial to road safety and comfort.



2. WIND DEFLECTOR.
The wind deflector reduces distracting noise and draughts when you drive with the sunroof open. Made of smoke-coloured plastic which is both heat and cold resistant.

3. ELECTRIC POWER DOOR MIRRORS.
Easily adjusted, remote-controlled by control panel in the car. Standard on 240 GLT UK and 240 GLE Overseas.



4. SUNBLINDS FOR REAR WINDOW.
The blinds help keep the car cooler in strong sunlight and protect the rear seat passengers from irritating glare and heat. Do not obstruct rear view vision.

5. CENTRAL LOCKING.
All doors can be opened and locked simply by operating the lock in the driver's door either from the inside by means of the sill



1. AIR CONDITIONING.

Volvo air conditioning for use all the year round! It combines with the car's standard heating and ventilation system to form an in-car climate facility. Which makes it something special and different from most other makes of system where air conditioning and heating systems are separate.

Volvo air conditioning has a higher cooling capacity than most other makes. Which is very noticeable on a hot summer's day. You

can drive mile after mile and still feel fresh and relaxed when you arrive. In the autumn, you will appreciate the compatibility which exists between the genuine Volvo air conditioning and the heating and ventilation system. The air conditioning system demisters the air before the heater warms it up, thus reducing the risk of window misting.

IMPORTANT! An air conditioning system can only be fitted if your car has been specified with the CU combined unit

TURN YOUR VOLVO INTO A LIMOUSINE!

For people who do a lot of driving there are many different accessories which are designed to improve your driving comfort and help you to arrive at your destination feeling fresh and relaxed.

Cruise control, for example, enables you to maintain an even tempo and lets you take your eyes off the speedometer and really concentrate on the road. Air conditioning keeps the climate inside the car pleasant at all times.



heating system. This must be ordered ex-factory. See below. Standard on 240 US and some 240 Overseas models.

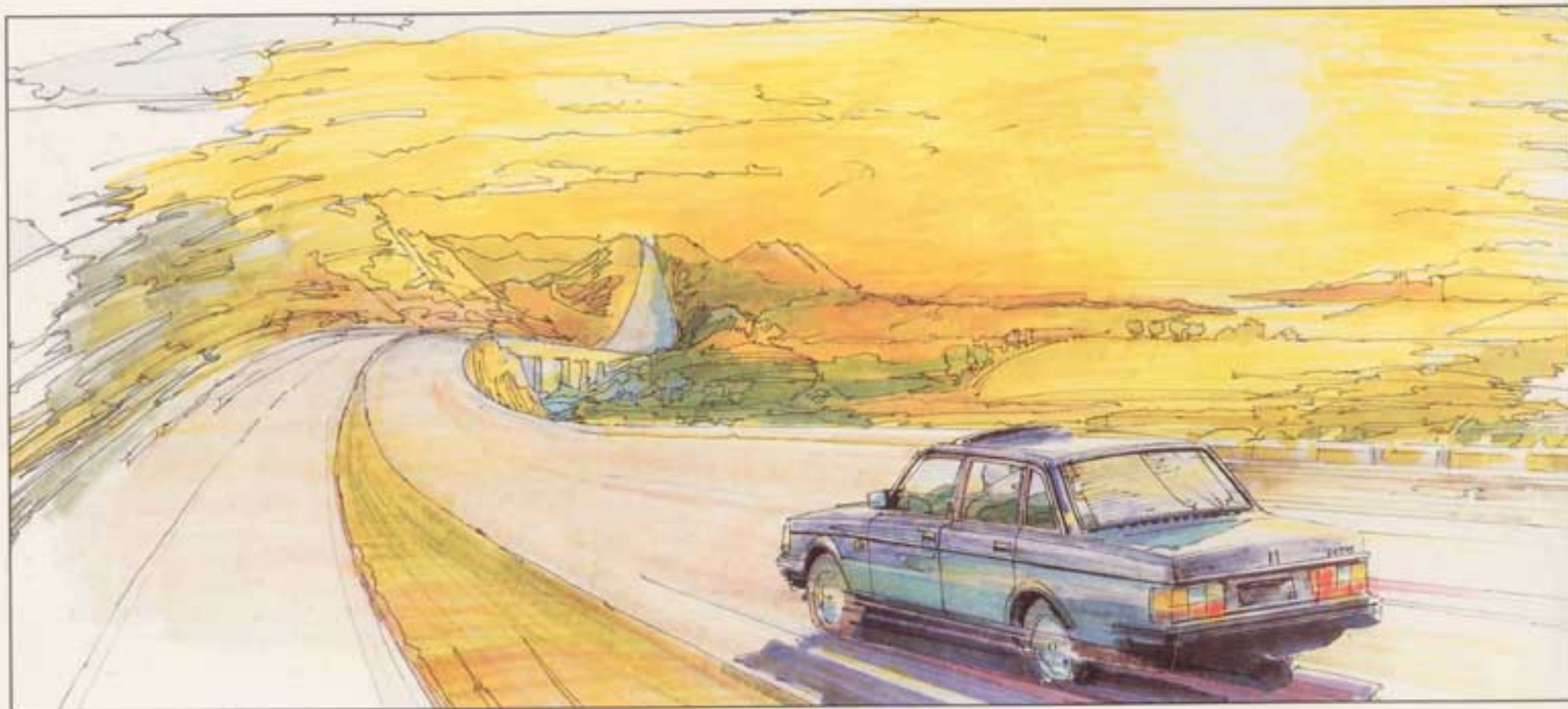
COMBINED UNIT. A heating system which can be combined with air conditioning at the factory or afterwards. See above. Standard on Overseas models.

2. CRUISE CONTROL.

Automatically maintains the set speed by means of an advanced electronic system.

You accelerate to the desired speed and then touch the cruise control button. The car will now maintain the set speed. Very convenient, comfortable and fuel-efficient for all long-distance drivers.

The system is immediately disconnected as soon as the brakes or clutch are touched. After accelerating, the car can automatically revert to the previously set speed by the driver pushing the "Resume" button. Only for left hand driven cars.





4. REAR TELESCOPIC AERIAL.
Fits to left-hand rear wing. Standard on 240 sedan UK.

TELESCOPIC POST AERIAL.
Fits to left-hand windscreen post. Spiral-cut outer casing to prevent wind roar. Black finish, length 1.250 mm extended. Standard on 240 station wagon UK.

5. FRONT AND REAR DOOR SPEAKERS HT-168.
30W. Set includes two speakers and installation parts. Front speakers standard on UK models.

6. REAR SPEAKER HT-169 FOR HAT SHELF.
40W.

7. FRONT SPEAKERS HT-205.
30W coaxial speakers 5". Set of two speakers with installation parts.

8. REAR SPEAKERS HT-217.
40W coaxial speakers, 5"×9" units and a 2" treble. Set of two speakers with installation parts.

9. VOLVO GRAPHIC 7-BAND EQUALIZER.

The advanced equivalent of normal tone controls. By splitting up the frequency range into seven areas, the graphic equalizer provides a much more accurate blending of tones.

1. CR-7123 STEREO RADIO AND TAPE DECK.

For 240 US models. With 24 preset frequencies (12 FM, 6 MW) and three different search systems: Automatic which lets you sample each audible frequency and then to select the one you wish to listen to. Manual search by means of the tuning knob, up or down through the frequency band.

Soft Muting and automatic sloping from stereo to mono in poor reception areas. Built-in fader for balance control between

front and rear speakers (only with extra power amp).

Tape player features auto-reverse, lockable fast winding, separate bass and treble controls, metal tape switching and DNR noise reduction. The display incorporates a clock.



1. Package include for upper install 240 sedan: Amplifiers HA-3121, 2x25W and HA-3141, 2x40W. Rear telescopic aerial and telescopic post aerial for station wagons. Front speakers HT-205, 30W, rear hat-shelf speakers HT-217, 40W.

Package include for upper install 240 sedan: Amplifier HA-4020, 4x20W. Rear telescopic aerial and telescopic post aerial for station wagons. Front speakers HT-168, 30W, rear hat-shelf speakers HT-169, 40W.

Package include for upper install 240:

Amplifier HA-4020, 4x20W. Rear telescopic aerial and telescopic post aerial for station wagons. Front speakers HT-168, 30W, rear door speakers HT-168, 30W.

Package include for upper install 240: Rear telescopic aerial and telescopic post aerial for station wagons. Front speakers HT-168, 30W.

2. POPULAR RADIO CR-3033.

For 240 non-US models. An excellent all-round radio with a three waveband receiver

and pushbutton pre-sets, tone control, four speaker fader when specified with power amp. The Popular also has Soft Muting and output is 2x8W.

The tape player features auto-reverse, auto-eject, lockable fast winding in both directions, and pinch-off, a system which prevents damage to the tape by retracting it from the drive shaft and rollers when the set is switched off.

2. Package include for upper install 240:

Rear telescopic aerial and telescopic post aerial for station wagons. Front speakers HT-168, 30W.

3. POWER AERIAL FOR SEDANS.

Extends automatically when the radio is switched on and is automatically retracted again when the set is switched off. The aerial can also be controlled separately by means of a switch.



1. Package include for upper install 240 sedan: Amplifier HA-3121, 2×25W. HA-3141, 2×40W. Rear telescopic aerial and telescopic post aerial for station wagons. Front speakers HT-205, 30W, rear hat-shelf speakers HT-217, 40W.

Package include for upper install 240: Amplifier HA-4020, 4×20W. Rear telescopic aerial and telescopic post aerial for station wagons. Front speakers HT-168, 30W, rear door speakers HT-168, 30W.



player. Auto-reverse, lockable fast winding in both directions, metal selector, and other features. An equalizer can also be used.

3. Package include for upper install 240 sedan: Amplifier HA-4020, 4×20W. Rear telescopic aerial and telescopic post aerial for station wagons. Front speakers HT-168, 30W, rear hat-shelf speakers HT-169, 40W.

Package include for upper install 240: Amplifier HA-4020, 4×20W. Rear telescopic aerial and telescopic post aerial for

station wagons. Front speakers HT-168, 30W, rear door speakers HT-168, 30W.

4. ELECTRONIC ALARM WITH MAGNETIC CODED KEY.

With vibration sensor. When your car is equipped with an advanced audio system, an efficient and reliable burglar alarm is a sensible investment. The Volvo alarm protects your car and the accessories from theft.

When triggered, the alarm starts the horn and flashes the lights. This can take place

before the pilferer has actually entered the car if, for example, an attempt is made to break a side window. The sensitive vibration sensor is also triggered should an attempt be made to open the doors, engine bonnet or boot lid. And the ignition is interrupted immediately.

A flashing light-emitting diode on the top of the fascia warns would-be thieves that the car is protected by an activated

alarm system — which in itself is a valuable deterrent. The alarm can be activated automatically or by means of a special magnetic key.

TURN YOUR VOLVO INTO A MUSICAL HAPPENING!

You appreciate good music. Whether it's rock or baroque, you want good quality sound. In your car, too.

For your kind of person, we created the Volvo Sound System. Developed in collaboration with one of the world's leading manufacturers of audio equipment for cars. A system which is matched to the inside acoustics of your Volvo to give you the very best in sound.

1. CR-705, STEREO RADIO AND TAPE DECK WITH THEFT CODE AND AVI TRAFFIC NEWS.

For 240 non-US models.

24 pre-selected frequencies (12 FM, 6 MW and 6 LW) with three different search systems.

Automatic search which enables you to hear a sample from every available frequency. You then select the one you want to listen to. Manual search using the tuning control up and down through the

frequency bands.

Soft Muting and automatic sloping from stereo to mono in poor reception conditions, electronic suppression of disturbance and separate bass and treble controls.

Tape player with auto-reverse, lockable fast winding, metal selector and DNR noise reduction.

This system is also equipped with a clock and theft code which means that the receiver cannot be used by anyone who does not know the code.



2. MUSIC MACHINE TD-3043.

For 240 non-US models. The star of the Volvo audio programme. Pre-sets for 12 FM, 6 MW and 6 LW stations. Local/DX selector for strong/weak stations. Sloping transition between stereo and mono in areas where reception is poor, electronic suppression, and DNR noise reduction for disturbance-free listening. Loudness function, fader control and separate treble and bass controls. The tape player has motorized cassette loading, lockable fast

winding in both directions, Dolby and DNR noise reduction as well as a selector for metal tapes.

Push the "NEXT" function and the tape player fast-winds to the next recorded tune. The radio also incorporates a digital clock. The Music Machine is a tuner-deck and therefore requires a separate power amp.

2. Package include for upper install 240 sedan: Amplifier HA-3121, 2×25W. HA-3141, 2×40W. Rear telescopic aerial

and telescopic post aerial for station wagons. Front speakers HT-205, 30W, rear hat-shelf speakers HT-217, 40W.

Package include for upper install 240: Two amplifiers HA-3121, 2×25W + 2×25W. Rear telescopic aerial and telescopic post aerial for station wagons. Front speakers HT-168, 30W, rear door speakers HT-168, 30W.

3. MUSIC RADIO CR-3083.

For 240 non-US models. The ideal radio for

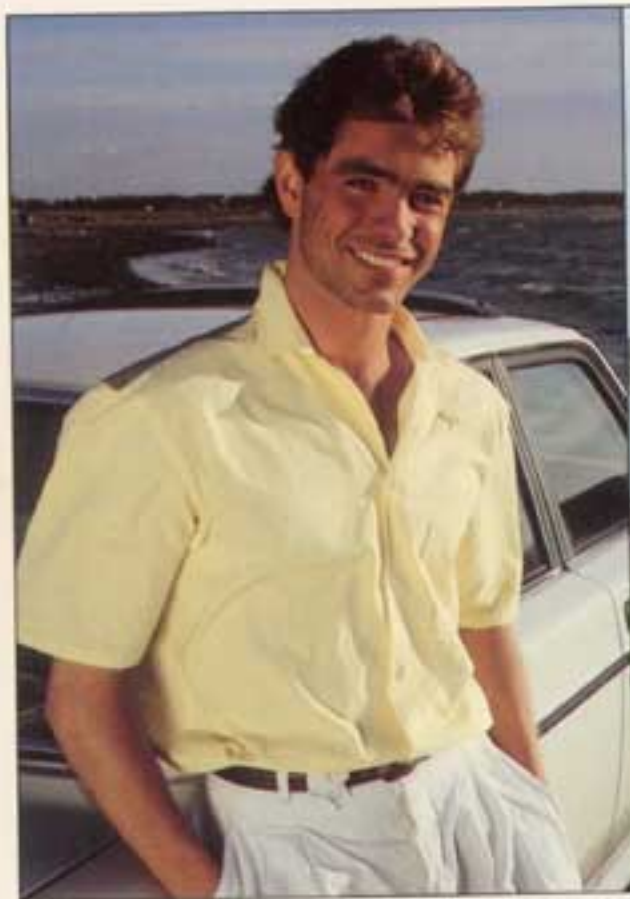


those who prefer to listen to music while driving. It has pushbutton selection of five preset stations, three VHF, one MW and one LW. Separate bass and treble controls, loudness, four-speaker fader in combination with extra power amp. Also Soft Muting for automatic noise reduction between stations, and sloping stereo/mono transition for varying reception conditions. Output: 2×6W.

Advanced design tape player with all the basic features. DNR — Dynamic Noise Reduction — covers both the radio and tape



*Thanks to a large amount of different
Genuine Volvo Accessories, you can make your Volvo exactly
the car you want it to be. More beautiful, faster, sportier,
more comfortable and more practical.*



*This is your catalogue of Genuine Volvo
Tourist & Diplomat Sales Accessories. A most comprehensive
accessories programme. Developed by Volvo for your tax- and duty-
free Volvo. It provides you with the opportunity of creating
your own, very personal Volvo.*