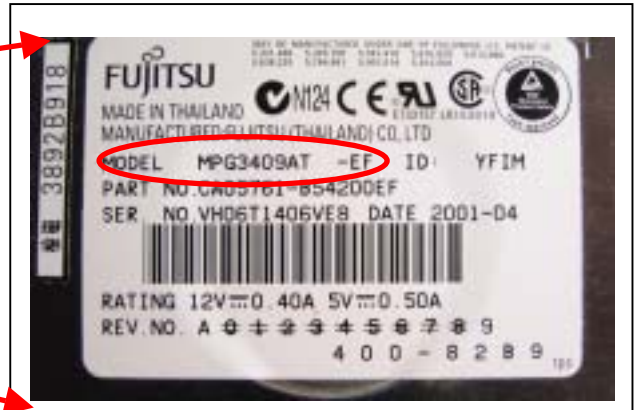


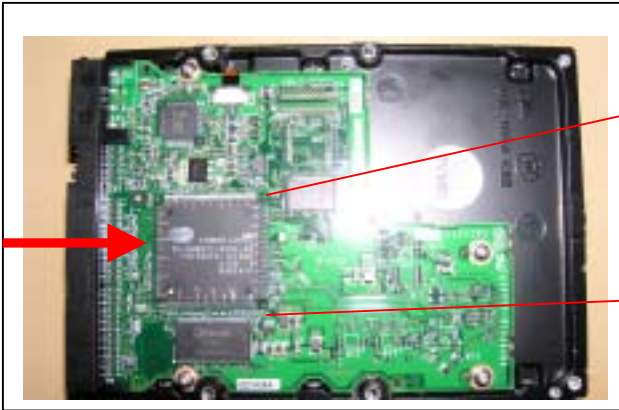
How to recover FUJITSU HDD (MODEL MPG3409AT-EF) by using a hand-made jig, magnifying glass and a multimeter



FUJITSU (MODEL MPG3409AT-EF)



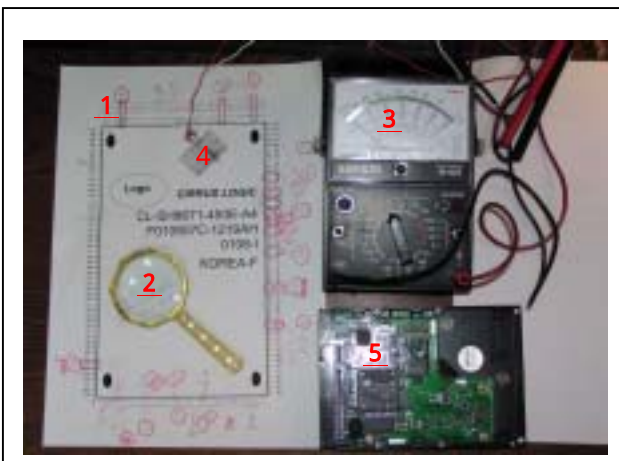
Label of MODEL MPG3409AT-EF



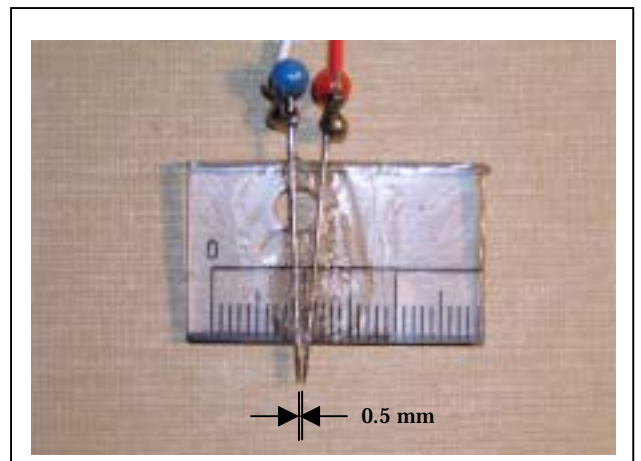
CIRRUS LOGIC (CL-SH8671-450E-A4)



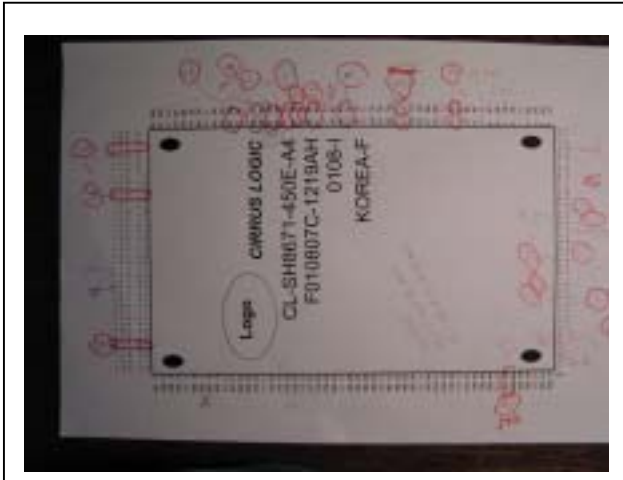
CIRRUS LOGIC (CL-SH8671-450E-A4)



- 1) Package lead assignment diagram
- 2) Magnifying glass (x5)
- 3) Multimeter
- 4) Hand-made jig
- 5) FUJITSU (MODEL MPG3409AT-EF)



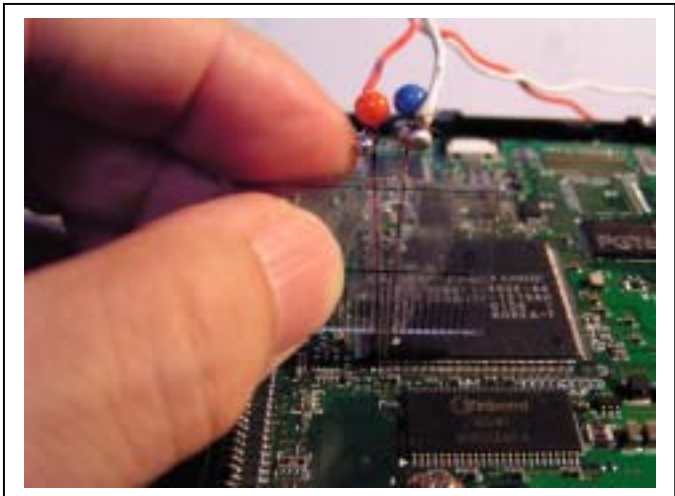
Hand made jig for probing leads. I used sewing needles as probe pins. Spacing between two needles should be 0.5 mm.



Package lead assignment diagram



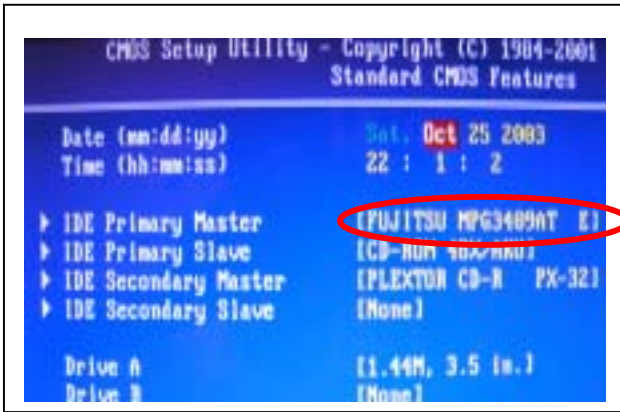
Probing adjacent leads by a hand-made jig under magnifying glass



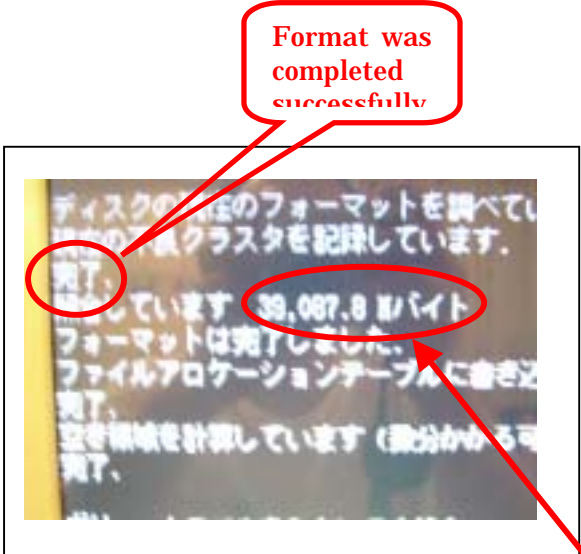
How to probe leads by a jig



Look for leakage between adjacent leads using a multimeter

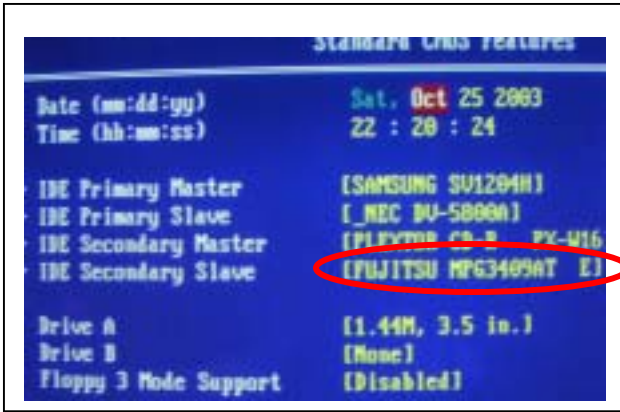


Recognized as a master HDD after probing



Format was completed successfully

Format was completed successfully and 40 G byte was recovered



This one now can be used as an external HDD