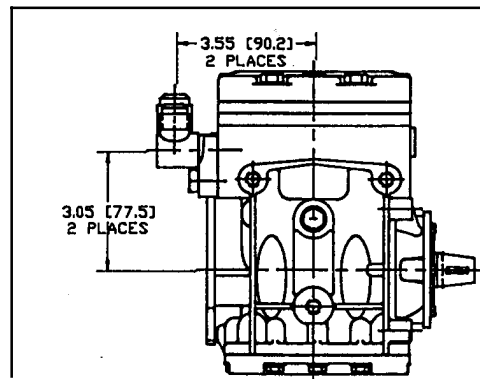
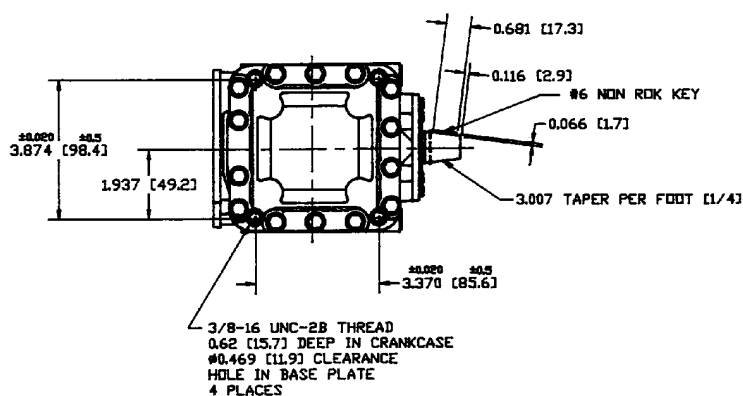
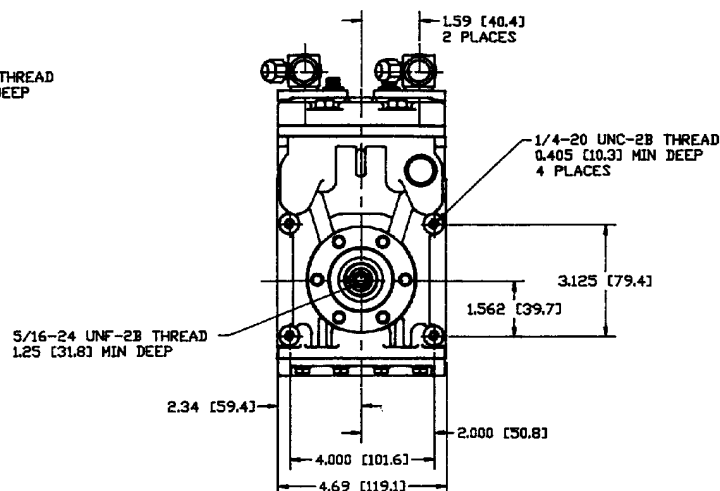
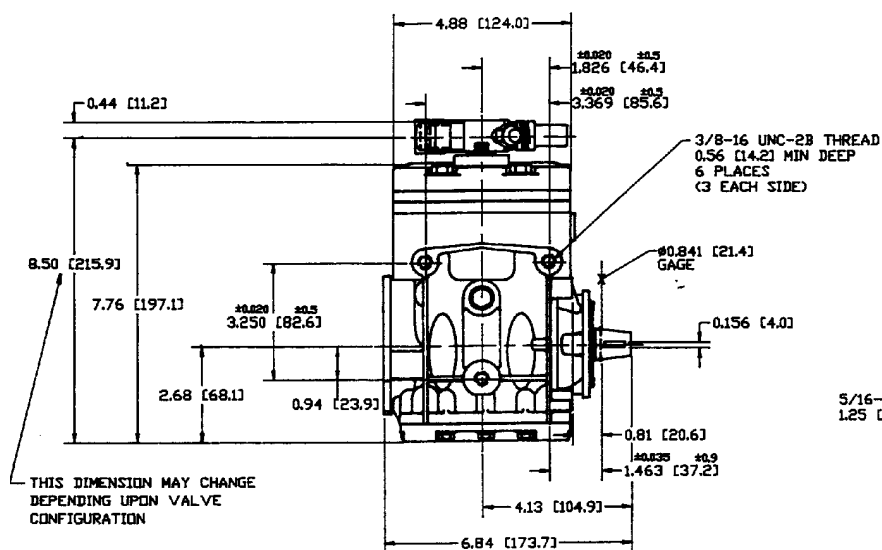




Compressor Specifications

Super-Compact ("Mini") Models



DIMENSIONS: IN. (mm)

NOTE: Super-Compact models are designed to have the fittings on the top or from the rear (low profile).

SPECIFICATIONS	SC 206	SC 209
No. Cylinders	2	2
Bore, in. (mm)	1.875 (47.63)	1.875 (47.63)
Stroke, in. (mm)	1.105 (28.07)	1.573 (39.95)
Disp., cu. in./rev. (cc/rev)	6.10 (100)	8.69 (142)
R.P.M. - Max.	6000	6000
Refrigerant	R-12,22,502,134a & new blends	R-12,22,502,134a & new blends
Initial Oil Charge, fl. oz. (ml)*	12 (355)	12 (355)
Weight, lbs. (kg)	13.0 (5.9)	13.3 (6.0)
Lubrication	Splash and Positive Pressure and Oil Return Through Suction Side	

*Some OEM specifications are as high as 15 fl. oz. (444 ml).